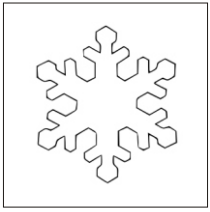
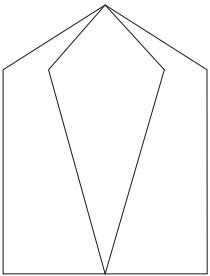


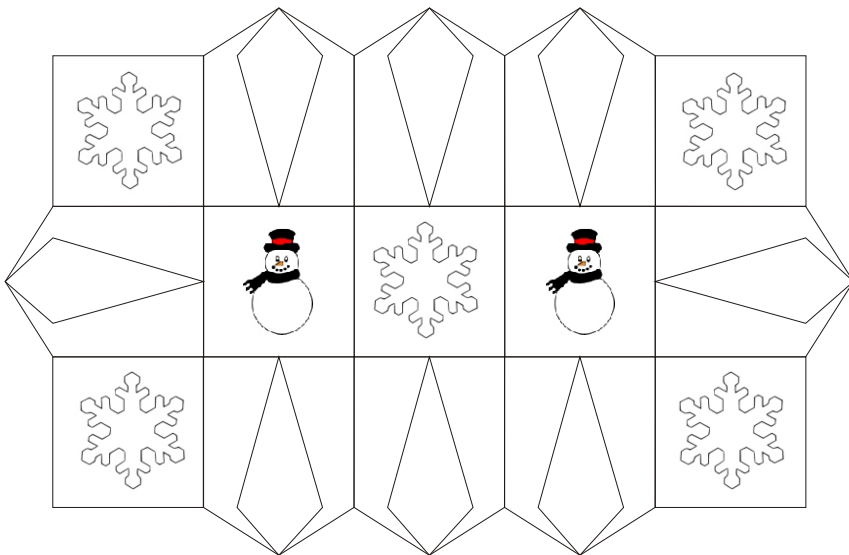
# Snowman Table runner



Snowflake and Snowman square. Hoop your stabilizer and run the straight placement stitches. Remove from machine and lay down the top fabric. Return to machine and run the design once the center design is finished remove from machine and place the back fabric. Return to machine and run the tack down stitches. Remove from machine and trim the front and back fabric. Return to the machine and run the finale satin stitches.



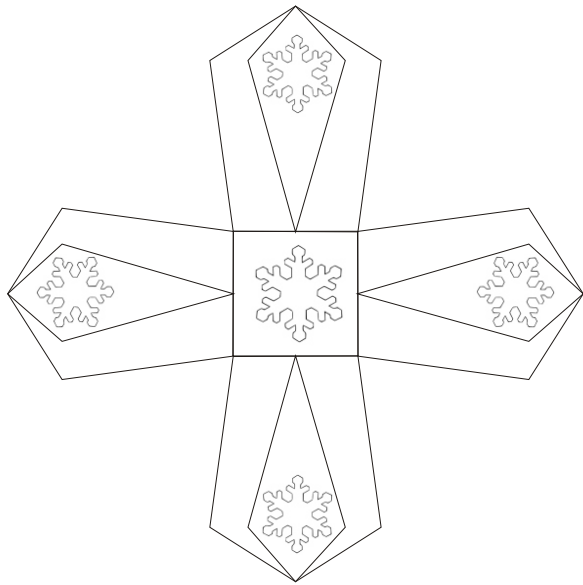
Pointed panel, hoop the stabilizer and run the placement stitches. Remove from machine and lay down front fabric #1 return to machine and run the tack down stitches and the placement stitches for front fabric #2. Remove from machine and lay down front fabric #2 and return to machine. Run the tack down stitches remove from machine and trim fabric #2 return to the machine and stitch the satin stitches around fabric #2. Remove from machine and lay down your back fabric. Return to machine and run the placement stitches once they are stitched again remove from the machine and trim front and back. Return to the machine and finish.



Create enough panels for your desired size runner.  
Have fun and use your imagination!

## Snowman Bowl

Panels are created the same as the runner.



To assemble I stitch Pieces to the bottom With a regular sewing machine but because this bowl is small I hand stitched the sides together with a whip stitch.