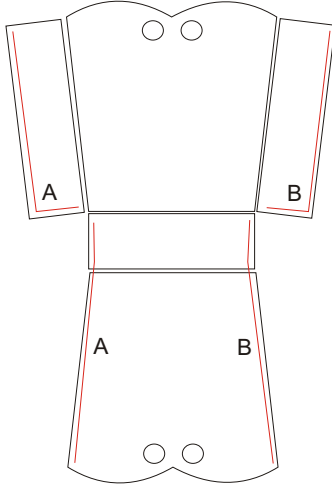


Gift Bag instructions



Stitch out all of the panels
I used badgemaster.
Rinse panels out and let dry.

Once Dry I assembled them
as shown in the diagram.
Using a zigzag stitch on my
sewing machine.
From here I assmebled the
rest stitching by hand using a
whipstitch. A to A and B to B.
Then ran a ribbon through the
top holes.